

**DESIGN • ENGINEER • MANUFACTURE**



**Contract Holder**  
Contract 47QSWA20D002L



**S • A • F • E**

**— STRUCTURE DESIGNS —**

JOHN 13:7

**CREATIVE & CUSTOMIZABLE SOLUTIONS  
FOR JUST ABOUT ANY PROJECT!**

**CAPABILITY STATEMENT**

**AIR • LAND • SEA • SPACE**

# DESIGN ▪ ENGINEER ▪ MANUFACTURE

IS WHAT WE DO WITH YOUR INPUT

## ABOUT S.A.F.E. STRUCTURE DESIGNS

S.A.F.E. Structure Designs is a global leader in ergonomic safety-first support equipment for the aviation, marine, railroad, heavy equipment, and industrial industries. We are an ISO 9001:2015 company supporting both the civilian and military sector with our design, engineering and manufacturing capabilities. We guarantee an ergonomic form, fit & function through creative and customizable project solutions for just about any application involving land, air, sea or space. We have seven manufacturing facilities located in the USA, each with its own unique set of capabilities.

S.A.F.E. is a GSA Contractor Holder and is sought after throughout each industry for our ability to increase safety and efficiency in any environment.

We've worked alongside customers from around the world to design products that exceeded their expectations. Our close collaboration with our customers enables us to create custom-designed, precision-manufactured equipment that delivers enhanced safety and efficiency.

Our design process is completely free of cost to you, and we'll work closely with your team to understand and define your exact requirements. This process ensures that we provide the best solution to meet your unique circumstances.

**WE'LL DESIGN YOUR VISION ON OUR DOLLAR... SO WHY NOT GIVE US A TRY?**



**SAFETY & EFFICIENCY THROUGH  
ERGONOMIC SOLUTIONS**

# OUR VISION



Our vision as a global leader is to provide the industry with creative and customizable solutions, specific to your requirements, that are cost effective without sacrificing quality.

Our goal is to keep your technicians safe from the unexpected. Crew protection is becoming a major requirement in our industry, and you will see this emphasis placed into our ergonomic, safety-first design.

Our design, engineering, and manufacturing emphasis is built around one overall goal; **ERGONOMICS**. It is proven that our ergonomic custom equipment increases **SAFETY** and **EFFICIENCY** for the technicians.

ITEM NO.	DESCRIPTION	QTY.
1	WE09	1
2	CU10	4
3	CU11	4
4	CU12	4

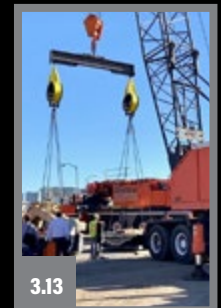
# MOBILE ROUGH-TERRAIN WAR EQUIPMENT



# MOBILE DEPLOYABLE EQUIPMENT



# WAR & MISSILE EQUIPMENT



# SPACE EXPLORATION

S.A.F.E. Structure Designs provides solution sets to the space exploration Industry. With our advanced design, engineering and manufacturing capabilities, we provide creative and customizable solutions for projects to both the right and left of T-0.

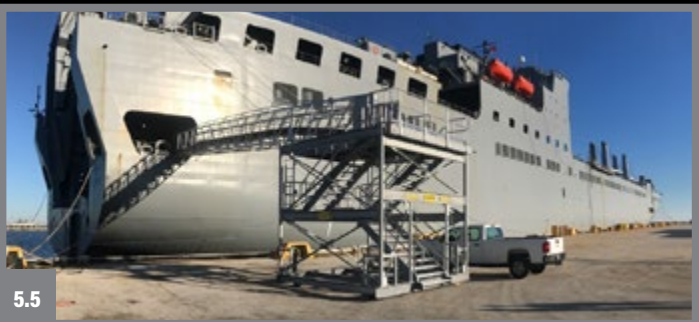
In addition, we have partnered with top tier space exploration companies in the development of space ports around the world. As a team, we have access to the required skill set that the rest of the world doesn't. S.A.F.E. and our strategic partners are one of the few organizations in the world that can execute an FAA space port design/build in a cost effective and timely manner



4.1

# MARITIME PRODUCTS

We support marine maintenance facilities around the world because we understand the value in safety and efficiency — and we know how to provide you with both. Our OSHA-compliant work platforms provide upper-level access for both maintenance and manufacturing of boats, ships, and submarines. With options like adjustable handrails, extendable sliders, and on-board air and electric hookups, our platforms are the safest and most efficient solution for marine equipment technicians.



# MARITIME SHIP & TUG BOAT RESTORATION





7.1



7.2



7.3



7.4



7.5





8.1



8.2



8.3



8.4



8.5



8.6



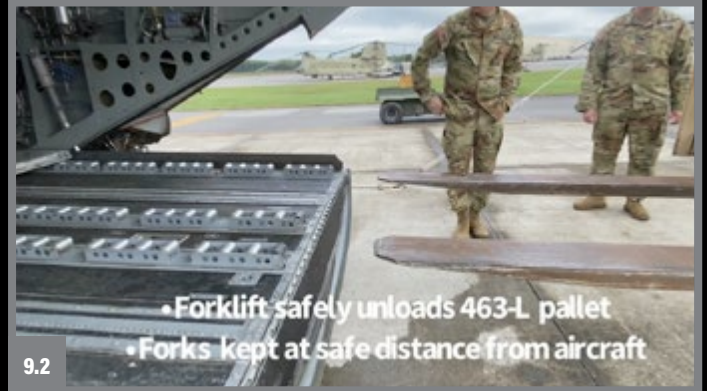
8.7



8.8

# CARGO LANDING EQUIPMENT PRODUCTS

We offer a variety of different options for cargo landing equipment products. Whether you're looking for a custom-built ERFS Rollers & Shoring, or our CELS Cable-Enabled Loading System for your aircraft, we can offer a variety of custom solutions and more.

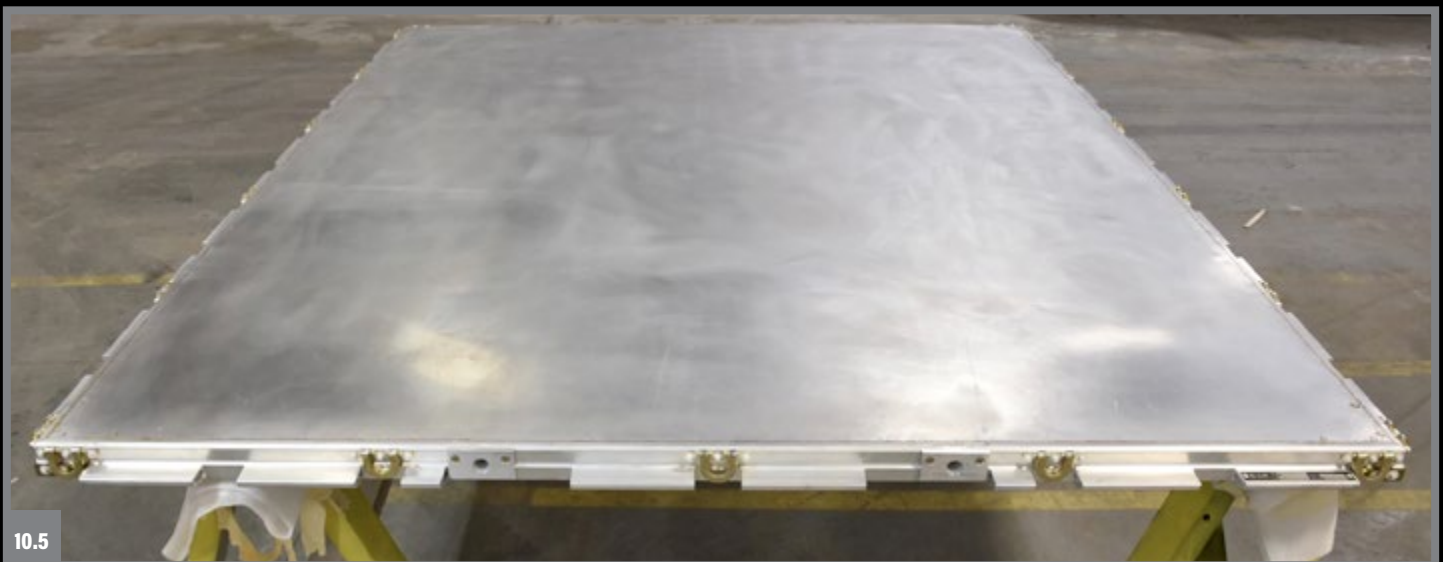


## CLIENT TESTIMONIAL

“Having been an aircraft mechanic for 25 plus years before accepting my present position, I can attest to the accuracy of this statement: ‘If it doesn’t work well, it will not get used.’ The fact that the equipment supplied by S.A.F.E. is used, confirms that they do indeed work! The willingness of the S.A.F.E. team to adapt, change, or otherwise alter their equipment to meet or exceed the needs of their customers is testimony to the end result of that equipment being used by the technicians.”

- James Valky, United States Coast Guard





# ROTOR WING AVIATION PRODUCTS

We offer custom aviation maintenance platforms and safety equipment for all major rotor wing aircraft manufacturers. See below for some examples of products for our top rotor wing manufacturers.

Don't see your aircraft here? Contact us and we can work with you to build a customized solution that meets your needs.



11.1



11.2



11.3



11.4



11.5



11.6



11.7



11.8



11.9



12.1



12.2



12.3



12.4



12.5



12.6



12.7



12.8



12.9



12.10



12.11

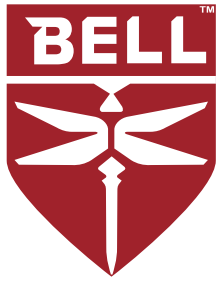


12.12



12.13





14.1



14.5



14.2



14.4



14.6



14.3



14.7



14.8



14.9



14.10



14.11



14.12



15.1



15.2



15.3



15.4



15.5



15.6



15.7



15.9



15.10



15.8



15.11



15.12



15.13



15.14





16.1



16.2



16.3



16.4



16.5



16.6



16.7



16.8



16.11



16.9



16.10



17.1



17.2



17.3



17.4



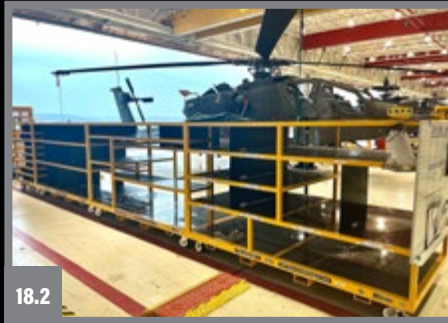
17.5



17.6



18.1



18.2



18.3



18.4



18.6



18.7



18.5



18.8



18.9



19.1



19.2



19.3



19.4



19.5



19.6



19.7



19.8



19.9



19.10



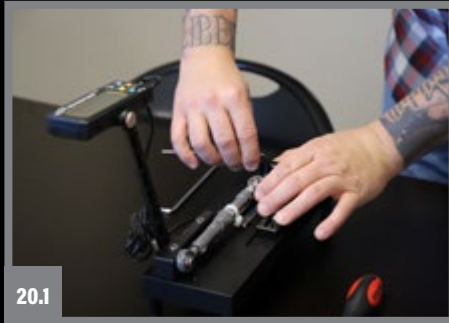
19.11



19.12



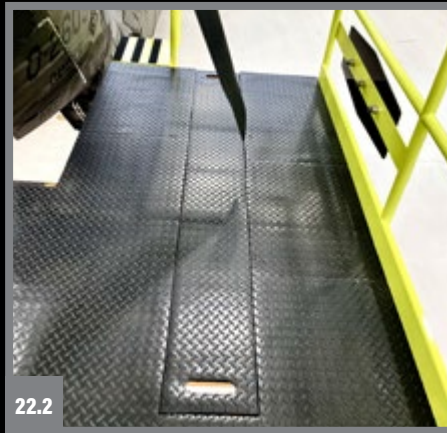
19.13







22.1



22.2



22.3



22.4



22.5



23.1



23.2





## CLIENT TESTIMONIAL

“We highly recommend S.A.F.E. Structure Designs and have a deep appreciation for the equipment they manufacture. Their customer service and design team’s attention to detail makes them stand out and we couldn’t be more delighted that we chose, and continue to choose to work with S.A.F.E.”

- Paul Herrera Jr., Aviation Maintenance Supervisor, Army National Guard





25.1



25.2



25.3



25.4



#



26.1



26.2



26.3



26.4



26.5



26.6



26.7



26.8



26.9

# FIXED WING AVIATION PRODUCTS

We offer custom fixed wing aviation maintenance platforms for all major aircraft manufacturers. See below for some examples of products we've produced for a variety of fixed wing aircraft.



27.1



27.2



27.3



**S·A·F·E**  
— STRUCTURE DESIGNS —  
SINCE 1957

28.1



28.2



28.3



28.4



29.1



29.2



29.3



29.4



29.5



29.6



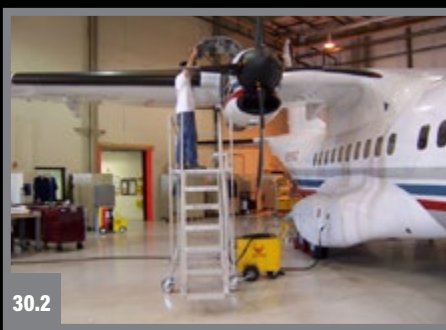
29.7



29.8



30.1



30.2



30.3



30.4



30.5



30.6



30.7



30.8



30.9



30.12



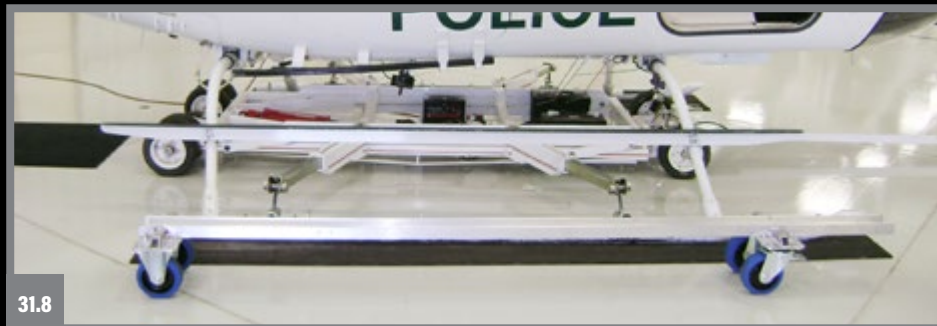
30.10



30.11

# HANGAR EQUIPMENT PRODUCTS

We offer a variety of different options for custom hangar equipment and parts storage products. Whether you're looking for a custom-built GIRD, Pitch Tool, Parts Cage, or Door Rack for your rotor wing or fixed wing aircraft, we can offer a variety of custom solutions and more.







32.1



32.2



32.3



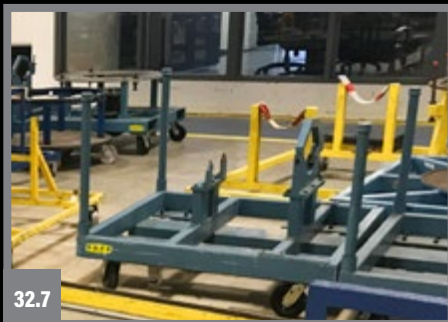
32.4



32.5



32.6



32.7



32.8



32.9



32.10



32.11

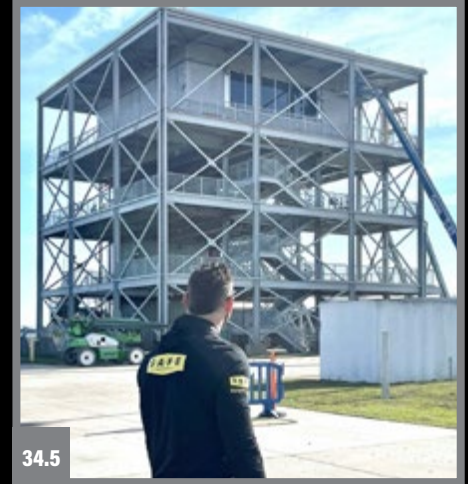
# RAILROAD PRODUCTS

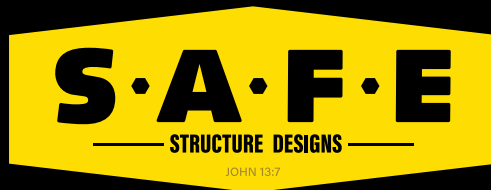
S.A.F.E. Structure Designs supplies the rail industry with custom work platforms and equipment that provide safe access to difficult or hazardous work environments. Our goal is to get you back out on the rails as safely as possible and in less time, that's why our customized solutions are centered around the safety and efficiency of your rail maintenance crews.



# VARIOUS CUSTOM METAL STRUCTURES

S.A.F.E. Structure Designs has the ability to design, engineer, manufacture, and install metal industrial structures of any type, large or small. In addition to this, we hold a Class-A General Contracting License, so you can utilize us from end-to-end. We can take you through the design, engineering, permitting, manufacturing, construction, and installation of your entire project.





**MEET THE S.A.F.E. STRUCTURE DESIGNS TEAM:**



**JOHNNY BUSCEMA**

President & CEO  
727.809.1146  
Johnny@SAFE-2.com



**GARRY BASS**

MIL & OGA Operations  
256.631.7330  
Garry@SAFE-2.com



**JON ZIEGLER**

Senior Engineer



**DONOVAN JUWANO**

Lean Manufacturing  
& Quality Control



**CHARLENE CARABEO**

Public Relations



**BROOK BROWN**

Logistics Manager



**FULVIA SANTONI**

Business Development  
702.209.8811  
Fulvia@SAFE-2.com



**BRY MAGGIO**

Administrative  
Assistant



**ADAM NICHOLS**

Senior Project Manager



**JIM SCHWADER**

Military Operations  
Account Manager



**GENE RODRIGUEZ**

Junior Engineer



**MIKE MACALUSO**

Graphic Designer  
503.893.9641