

S·A·F·E

— STRUCTURE DESIGNS —

JOHN 13:7



BOEING CH-47 CHINOOK CAPABILITIES STATEMENT

SAFETY & EFFICIENCY THROUGH ERGONOMIC SOLUTIONS

S·A·F·E

STRUCTURE DESIGNS

JOHN 13:7

CUSTOM SAFETY DESIGN, ENGINEERING, & MANUFACTURING**MAIN POINT OF CONTACT:****Johnny Buscema**

President & CEO

727.809.1146

Johnny@SAFE-2.com

COMPANY CONTACT:**S.A.F.E. Structure Designs**

10620 Southern Highlands Pkwy

Ste 110 - 319 Las Vegas, NV

702.209.8811

BUSINESS INFORMATION:**EIN:** 81-2003648**DUNS:** 080213821**CAGE CODE:** 7LQA9**NAICS CODES:**

- 332114
- 332312
- 332322
- 332420
- 333921
- 333923
- 336412
- 336413
- 336999
- 811310

CREDENTIALS:

- ISO 9001:2015 Certified
- GSA Contract Holder
- OSHA/AISC Quality Certified
- P/E (Professional Engineer) Certified

ORGANIZATIONAL SUMMARY

S.A.F.E. Structure Designs is an ISO 9001:2015 Certified global leader in the design, engineering and manufacturing of ergonomic safety-first maintenance stands, phase stands, fall protection platforms, hangar equipment, portable field equipment and specialty tooling. Our goal as an organization is to ensure functional work flows, safe access, and fall protection for maintenance technicians around the world, that's why our custom-line of "SAFETY-FIRST" products are OSHA/ANSI compliant, innovative, and solution-driven. S.A.F.E. Structure Designs can provide custom-built solutions for aviation, marine, railway, heavy equipment and various steel structures & equipment applications.

DIFFERENTIATORS

S.A.F.E. Structure prides itself on providing high-quality ergonomic custom solutions for our customers. We are experts in developing innovative designs centered around safety and efficiency. Studies by technicians worldwide whom are using our products have shown a 75% increase in SAFETY and 50% increase in EFFICIENCY.

WE HANDLE THE DESIGN COSTS

We work closely with our clients to ensure that all project requirements are met or exceeded. If we don't already offer what you're looking for, then our team will consult with you personally to create a design that meets your unique specifications at NO COST YOU!

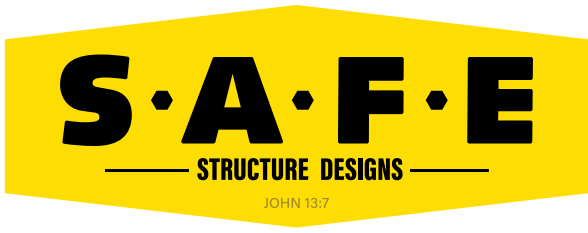
That's right - our team will design your vision on our dollar, so why not give us a try by inviting us out to your facility?

WHAT'S SPECIAL ABOUT OUR BOEING PRODUCTS?

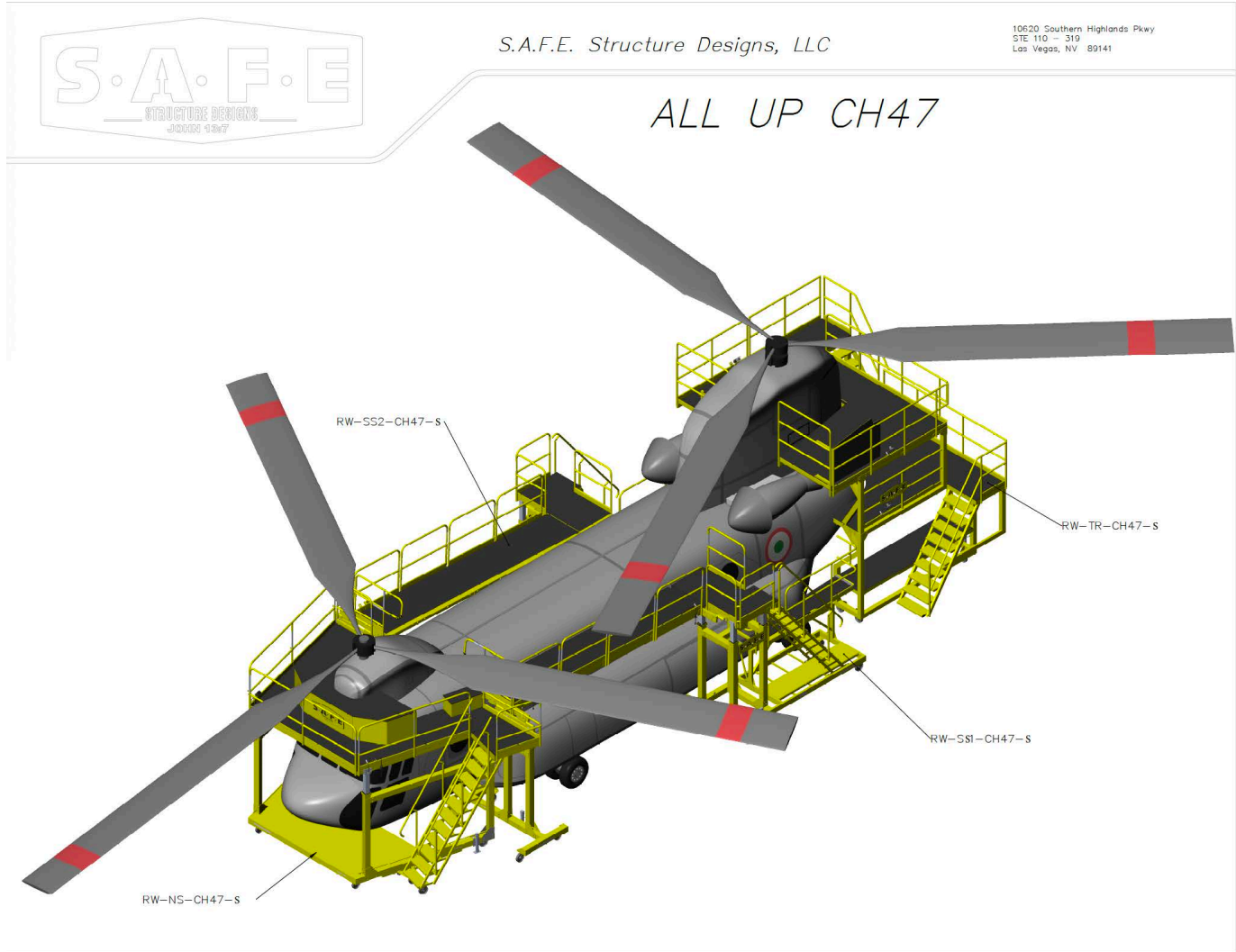
To inspire the best products on the market, we looked to the pros for help. S.A.F.E. perfected the initial custom Chinook design on a project for Columbia Helicopters. The requirement was to develop a versatile set of stands that could contour around the aircraft in a limited space while providing a safe environment for the mechanic. Years later, S.A.F.E. perfected the design under an awarded contract with the U.S. Army at Fort Hood. S.A.F.E. was one of the first pioneers on the market to develop CH-47 custom products which have now become the most ergonomic equipment available. Columbia Helicopters conducted studies that showed S.A.F.E. Structure Design's maintenance stands and hangar equipment increased their technicians efficiency by 60%, and increased their technicians SAFETY by 85%.

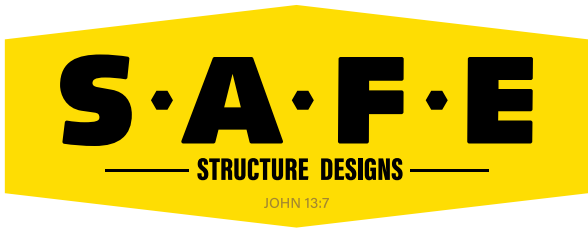
AWARDS & ACCOMPLISHMENTS

- Manufactured Custom Hangar Equipment for the USCG Fleet of Sikorsky MH-60 Jayhawks in Clearwater, FL
- Outfitted the USCG Mobile, AL Sikorsky MH-60 Jayhawks
- Awarded U.S. Army contract to supply custom fall protection platforms and hangar equipment for their fleet of CH-47
- Outfitted Columbia Helicopter's CH-47/CH-46 Chinook
- Awarded U.S. Army contract to supply custom maintenance stands and hangar equipment for fleet of Boeing Apache AH-64
- Outfitted Nassau County Police Department's Bell 429

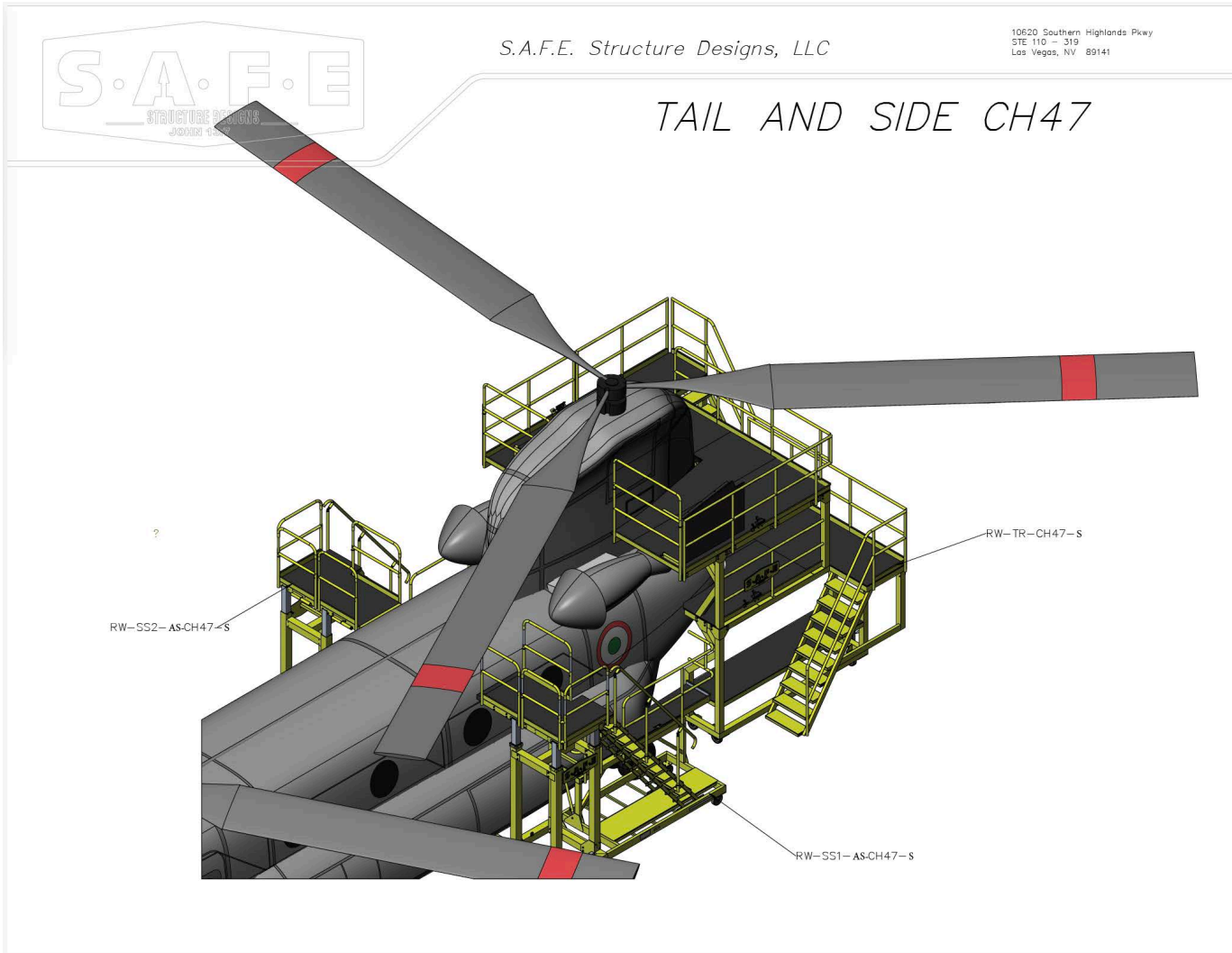


OPTION A





OPTION B



S.A.F.E. Structure Designs, LLC

10620 Southern Highlands Pkwy
STE 110 - 319
Las Vegas, NV 89141

TAIL AND SIDE CH47

We have a complete line of OSHA-compliant SAFETY FIRST ergonomic maintenance stand, hangar equipment and specialty tooling custom fit for the Boeing CH-47 Chinook.



Left Side P/N: RW-SS1-CH47-S Right Side P/N: RW-SS2-CH47-S



CH-47 Side Stands



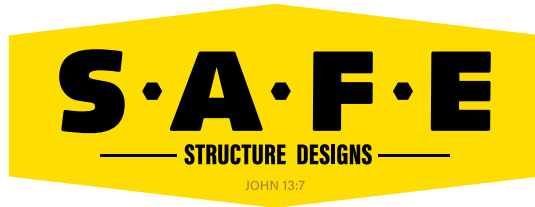
CH-47 Side Stands



P/N: RW-NS-CH47-S



AFT Pylon Maintenance



Boeing CH-47 Full Wrap Around Fall Protection Platform Set

*This set of fall protection stands can be positioned around the aircraft quickly. On average, two technicians should be able to move each platform into position.



P/N: RW-NS-CH47-S



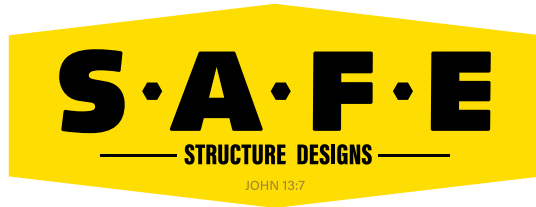
CH-47 Full Wrap Around



Cabin Entry Access



360 Degree Fall Protection



Boeing CH-47 Tail Maintenance Stand: RW-TR-CH47-S



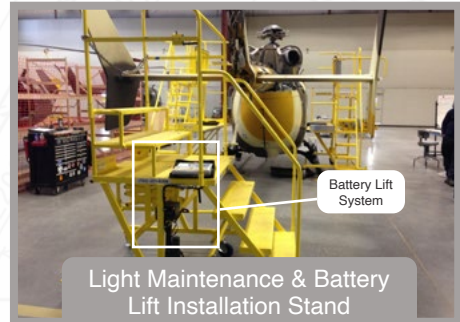
P/N: RW-TR-CH47-S



Door Rack



Engine Maintenance Stand

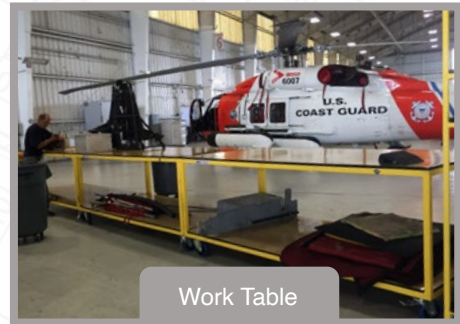


Battery Lift System

Light Maintenance & Battery Lift Installation Stand



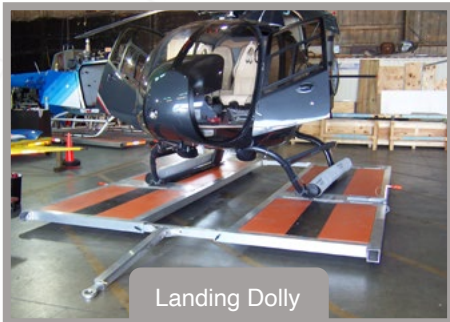
Parts Cage



Work Table



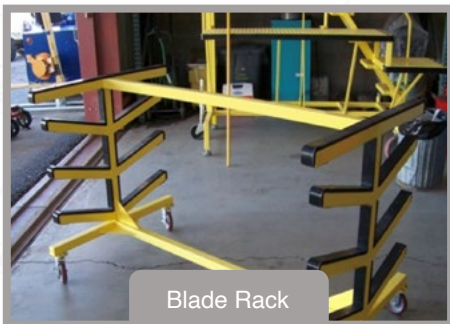
Gimbal Camera Install/Removal Device



Landing Dolly



Rotor Hub Stand



Blade Rack



Lightweight Transportable Hoist

OUR MAINTENANCE STANDS & FALL PROTECTION PLATFORMS INCLUDE THE FOLLOWING:



Diamond Plate Anti-Fatigue Mats

S.A.F.E. Structure Diamond Plate Anti-Fatigue Mats provide essential comfort to the mechanics feet, legs and back, resulting in enhanced productivity and lower levels of fatigue. The double-thick Nitricell sponge base is PVC loaded with Nitrile rubber for exceptional comfort, rebound, and long life.

Designed for heavy-use areas, the high-tech, diamond plate surface resists abrasion and most chemical spills.



FOD JUSTRITE 6-Gallon Oily Waste Can

Dispose of oily and combustible FOD safely. This 6-gallon step on garbage can has a raised, ventilated bottom which allows air-flow to help prevent spontaneous combustion. Oily waste container includes self-closing foot operated lid and large folding carry handle.

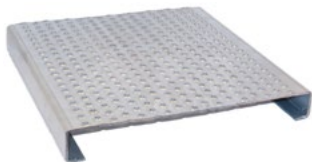
FOD container is made of heavy gauge galvanized steel and has a durable powder coat finish.



FOD Bag - Scaffold Hanging Style with Velcro Straps

A large heavy-duty vinyl padded "scaffold hanging-style" bag with FOD logo and velcro straps for safe and convenient disposal.

- Slotted Down Middle
 - Velcro Top
 - Holds Shape
-



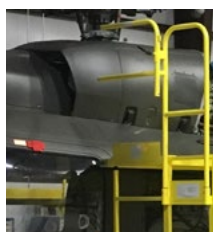
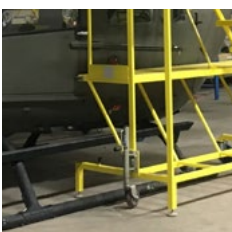
Plank Grating Traction Tread Steps

All steps feature a non-skid, safety first traction tread to help protect your technicians from slip accidents.



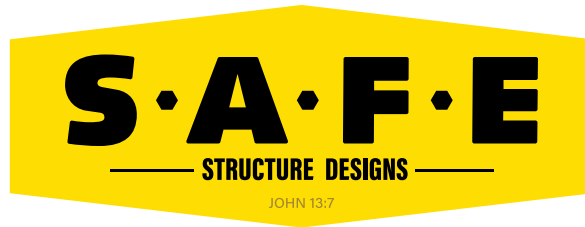
High-Precision Swivel Casters with Total Locking Brake System

Depending on the application needs, we supply our customers with the best shock absorbing rubber and synthetic swivel caster options available. In addition, all of our maintenance stands and fall protection platforms come with stabilizing jack systems.



S.A.F.E. Structure Design's Platform Decks Also Include:

- A Rub Rail on the Leading Edge to Protect the Aircraft
- Adjustable & Removable OSHA Compliant Handrails & Kick Plates
- Tool Trays



Our Steps for 100% Customization Guarantees Satisfaction:

- Step 1:** We preform a site visit to measure aircraft.
- Step 2:** We conduct research to find solutions that meet customer needs and expectations.
- Step 3:** We provide design concepts to the customer.
- Step 4:** We redesign concepts based off customer feed back / redlines.
- Step 5:** We fully engineer the platforms using our in house licensed PE's.
- Step 6:** We perform a site visit with our engineers to check the accuracy of the engineered drawings against the actual aircraft and gain customer feedback.
- Step 7:** We finalize our engineered draws and begin manufacturing.
- Step 8:** We commence manufacturing up to powder coating and final assembly stage.
- Step 9:** We perform an onsite test fit to assure proper form, fit, and function.
- Step 10:** We make any necessary modifications to the platform based on onsite test results.
- Step 11:** We complete powder coat and final assembly of the platform.
- Step 12:** We ship the final product to the customer.



COLUMBIA HELICOPTERS, INC.

June 30, 2017

To whom it may concern:

I am writing a letter of recommendation for SAFE Structure Designs. They have effortlessly satisfied our mechanics needs for custom, fall protection platforms for our CH-47D, BV234 (CH47) and BV107 (CH46). They meet OSHA requirements, are accommodating to the technicians and have given us superior flexibility with the limited hangar space we have. As mechanics are aware, fall protection platforms act more like a safety net when the technician is required to physically work on the aircraft as opposed to working on a maintenance stand. I continuously get thanked by our technicians, which is rare. With these platforms, the mechanics and leads are actually trying to justify why they need the platforms more on their project/aircraft.

Columbia Helicopters' request was unique and challenging, we requested a stand that was capable of adapting to our two main platforms. How can we buy a stand that can be adjusted in minutes and fit two unique airframes? SAFE Structure Designs fulfilled their commitment and surpassed our expectations. They scheduled several site visits to meet with our mechanics to get critical feedback during the design phase until we were completely satisfied. Once we were satisfied with the design, they took it through the engineering and production process. The platforms were manufactured to the concept design that we initially agreed on. Their quality and attention to detail was superior. As always with new design there can be challenges, for example, things that we did not think about but would have been nice. As CHI identified opportunities to make the design better, SAFE continuously reacted stride for stride with us to incorporate new design features. Their ability and desire to cater to the customers' needs make them stand apart from other companies I have worked with. I personally recommend S.A.F.E. Structure Designs, and will continue to collaborate with them to meet our maintenance challenges in the future.

Regards,

COLUMBIA HELICOPTERS, INC.

Oscar Acevedo 503-678-1222 x450
Platform Manager 503-887-1072 Cell
Columbia Helicopters, Inc. 503-678-5841 Fax
P.O. Box 3500 oscara@colheli.com
Portland, OR 97208 <http://www.colheli.com>

P.O. Box 3500 Portland, Oregon 97208-3500

TELEPHONE: (503) 678-1222 FAX: (503) 678-5841 WEBSITE: www.colheli.com

FAA APPROVED REPAIR STATION NO. CHIR823C

S·A·F·E

— STRUCTURE DESIGNS —

JOHN 13:7

A BRIEF WORD FROM JOHNNY BUSCEMA, OUR PRESIDENT & CEO:

"The key to our success has always been our ability to manufacture the highest quality and most ergonomic products available on the market. This process alone is what our customers value the most, and it has been crucial to the success of a company of this magnitude."

"I am so fortunate that Christ has afforded me the vision, skill set, and business acumen to successfully assemble and work with such a superior group of specialized team members. Our future is bright, and we welcome any and all challenges that drive us to exceed our client's expectations and enable us to be the best at what we do."

MEET THE S.A.F.E. STRUCTURE DESIGNS TEAM:



JOHNNY BUSCEMA

President & CEO
Johnny@SAFE-2.com



JIM SCHWADER

Military Operations
Account Manager



JON ZIEGLER

Senior Engineer



DONOVAN JUWANO

Lean Manufacturing
& Quality Control



CHARLENE CARABEO

Public Relations



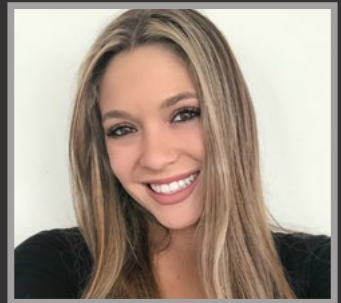
PHIL TIRADO

Logistics Manager



FULVIA SANTONI

Marketing & Account Exec.
Fulvia@SAFE-2.com



BRY MAGGIO

Admin. Assistant