

**S·A·F·E**

**STRUCTURE DESIGNS**

JOHN 13:7



# **BOEING AH-64 APACHE CAPABILITIES STATEMENT**

**SAFETY & EFFICIENCY THROUGH ERGONOMIC SOLUTIONS**

**S·A·F·E**

STRUCTURE DESIGNS

JOHN 13:7

**CUSTOM SAFETY DESIGN, ENGINEERING, & MANUFACTURING****MAIN POINT OF CONTACT:****Johnny Buscema**

President &amp; CEO

727.809.1146

Johnny@SAFE-2.com

**COMPANY CONTACT:****S.A.F.E. Structure Designs**

10620 Southern Highlands Pkwy

Ste 110 - 319 Las Vegas, NV

702.209.8811

**BUSINESS INFORMATION:****EIN:** 81-2003648**DUNS:** 080213821**CAGE CODE:** 7LQA9**NAICS CODES:**

- 332114
- 332312
- 332322
- 332420
- 333921
- 333923
- 336412
- 336413
- 336999
- 811310

**CREDENTIALS:**

- ISO 9001:2015 Certified
- GSA Contract Holder
- OSHA/AISC Quality Certified
- P/E (Professional Engineer) Certified

**ORGANIZATIONAL SUMMARY**

S.A.F.E. Structure Designs is an ISO 9001:2015 Certified global leader in the design, engineering and manufacturing of ergonomic safety-first maintenance stands, phase stands, fall protection platforms, hangar equipment, portable field equipment and specialty tooling. Our goal as an organization is to ensure functional work flows, safe access, and fall protection for maintenance technicians around the world, that's why our custom-line of "SAFETY-FIRST" products are OSHA/ANSI compliant, innovative, and solution-driven. S.A.F.E. Structure Designs can provide custom-built solutions for aviation, marine, railway, heavy equipment and various steel structures & equipment applications.

**DIFFERENTIATORS**

S.A.F.E. Structure prides itself on providing high-quality ergonomic custom solutions for our customers. We are experts in developing innovative designs centered around safety and efficiency. Studies by technicians worldwide whom are using our products have shown a 75% increase in SAFETY and 50% increase in EFFICIENCY.

**WE HANDLE THE DESIGN COSTS**

We work closely with our clients to ensure that all project requirements are met or exceeded. If we don't already offer what you're looking for, then our team will consult with you personally to create a design that meets your unique specifications at NO COST YOU!

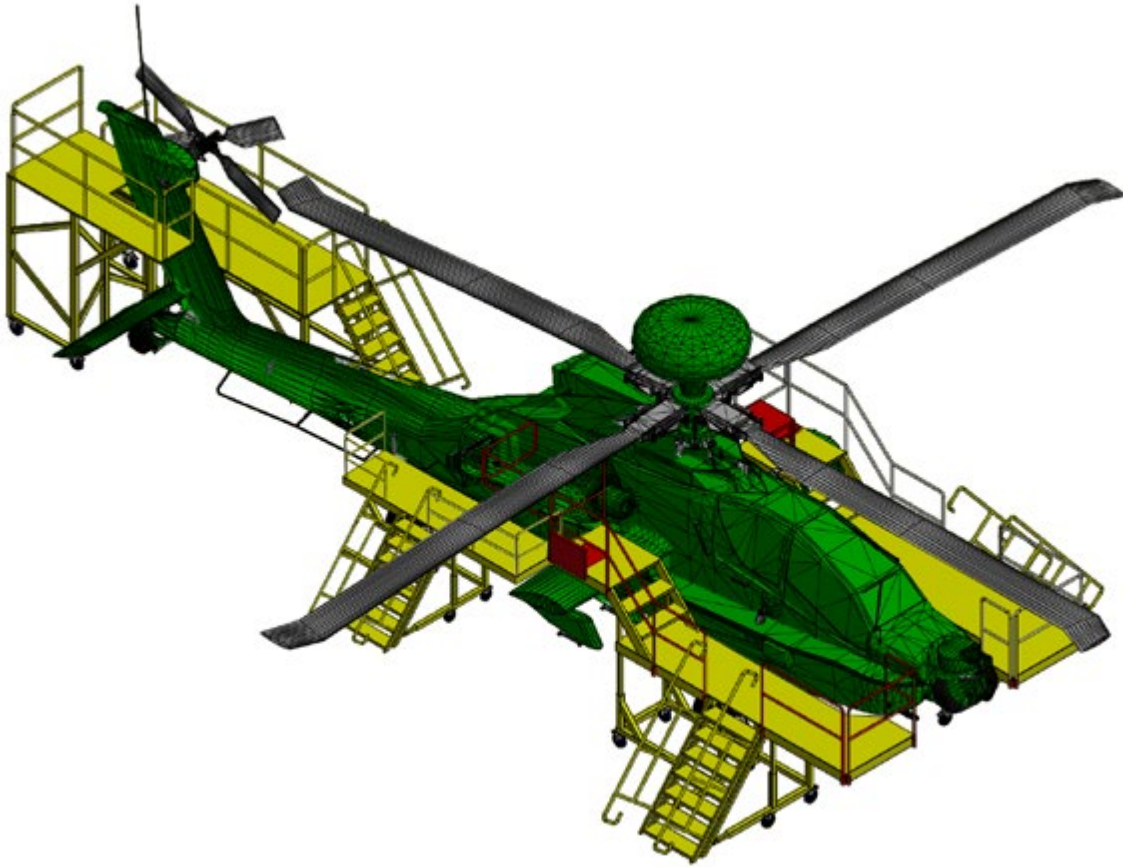
*That's right - our team will design your vision on our dollar, so why not give us a try by inviting us out to your facility?*

**WHAT'S SPECIAL ABOUT OUR BOEING PRODUCTS?**

To inspire the best products on the market, we looked to the pros for help. Our Apache AH-64 product line was first developed by S.A.F.E. Structure Designs on a special project for Boeing in Mesa, AZ. The requirement was to develop a set of fall protection platforms that could be used on the flight line for pre-flight checks, as well as, in the hangar for phase/routine maintenance. In order to accomplish this, the platforms were value engineered for minimal hangar space, easy mobility, and light weight, all while positioning the technician in the most ergonomic environment to create maximum safety and efficiency when working on the aircraft. S.A.F.E.'s Apache custom products are the most ergonomic equipment available. Boeing conducted studies that showed S.A.F.E. Structure Design's maintenance stands and hangar equipment increased their technicians efficiency by 50%, and increased their technicians SAFETY by 75%.

**AWARDS & ACCOMPLISHMENTS**

- Manufactured Custom Hangar Equipment for the USCG Fleet of Sikorsky MH-60 Jayhawks in Clearwater, FL
- Outfitted the USCG Mobile, AL Sikorsky MH-60 Jayhawks
- Awarded U.S. Army contract to supply custom fall protection platforms and hangar equipment for their fleet of CH-47
- Outfitted Columbia Helicopter's CH-47/CH-46 Chinook
- Awarded U.S. Army contract to supply custom maintenance stands and hangar equipment for fleet of Boeing Apache AH-64
- Outfitted Nassau County Police Department's Bell 429



Boeing Apache AH-64 Phase Maintenance Fall Protection Platforms, Routine Maintenance and Flight Line Pre Check Fall Protection Stands (complete set)

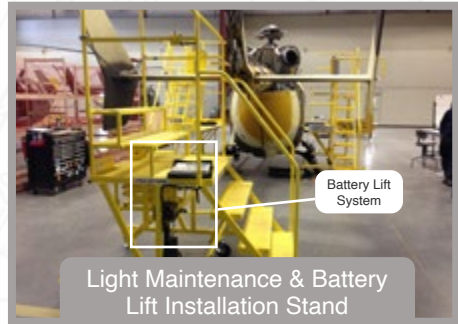




Door Rack



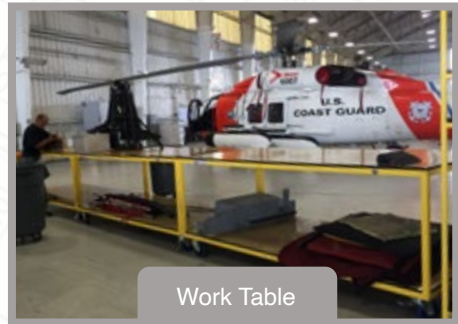
Engine Maintenance Stand



Battery Lift System  
Light Maintenance & Battery Lift Installation Stand



Parts Cage



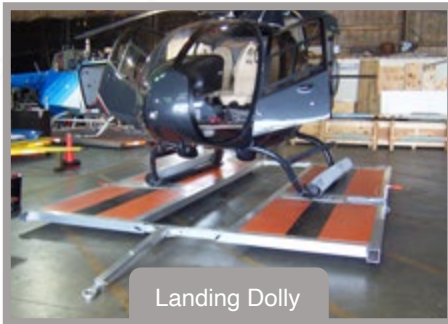
Work Table



Gimbal Camera Install/Removal Device



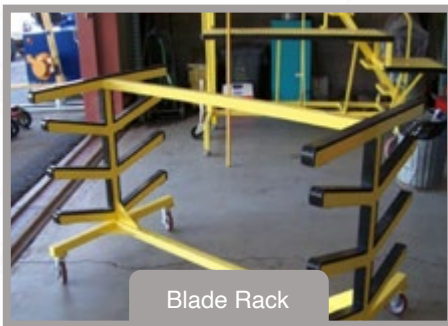
Lightweight Transportable Hoist



Landing Dolly

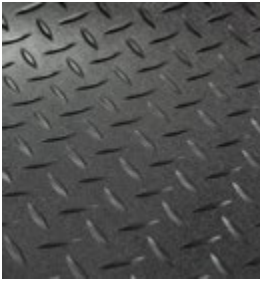


Rotor Hub Stand



Blade Rack

## OUR MAINTENANCE STANDS & FALL PROTECTION PLATFORMS INCLUDE THE FOLLOWING:



### Diamond Plate Anti-Fatigue Mats

S.A.F.E. Structure Diamond Plate Anti-Fatigue Mats provide essential comfort to the mechanics feet, legs and back, resulting in enhanced productivity and lower levels of fatigue. The double-thick Nitricell sponge base is PVC loaded with Nitrile rubber for exceptional comfort, rebound, and long life.

Designed for heavy-use areas, the high-tech, diamond plate surface resists abrasion and most chemical spills.

---



### FOD JUSTRITE 6-Gallon Oily Waste Can

Dispose of oily and combustible FOD safely. This 6-gallon step on garbage can has a raised, ventilated bottom which allows air-flow to help prevent spontaneous combustion. Oily waste container includes self-closing foot operated lid and large folding carry handle.

FOD container is made of heavy gauge galvanized steel and has a durable powder coat finish.

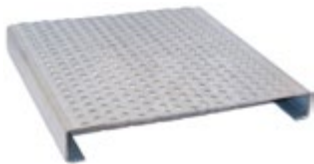
---



### FOD Bag - Scaffold Hanging Style with Velcro Straps

A large heavy-duty vinyl padded "scaffold hanging-style" bag with FOD logo and velcro straps for safe and convenient disposal.

- Slotted Down Middle
  - Velcro Top
  - Holds Shape
- 



### Plank Grating Traction Tread Steps

All steps feature a non-skid, safety first traction tread to help protect your technicians from slip accidents.

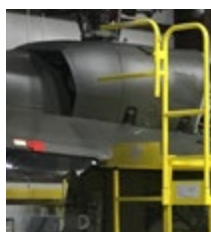
---



### High-Precision Swivel Casters with Total Locking Brake System

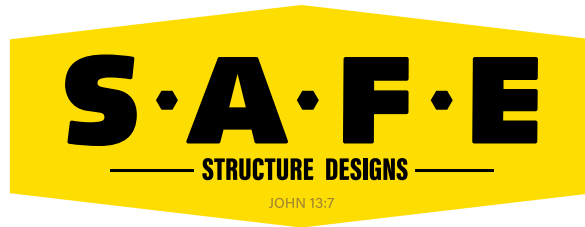
Depending on the application needs, we supply our customers with the best shock absorbing rubber and synthetic swivel caster options available. In addition, all of our maintenance stands and fall protection platforms come with stabilizing jack systems.

---



### S.A.F.E. Structure Design's Platform Decks Also Include:

- A Rub Rail on the Leading Edge to Protect the Aircraft
- Adjustable & Removable OSHA Compliant Handrails & Kick Plates
- Tool Trays



## **Our Steps for 100% Customization Guarantees Satisfaction:**

- Step 1:** We preform a site visit to measure aircraft.
- Step 2:** We conduct research to find solutions that meet customer needs and expectations.
- Step 3:** We provide design concepts to the customer.
- Step 4:** We redesign concepts based off customer feed back / redlines.
- Step 5:** We fully engineer the platforms using our in house licensed PE's.
- Step 6:** We perform a site visit with our engineers to check the accuracy of the engineered drawings against the actual aircraft and gain customer feedback.
- Step 7:** We finalize our engineered draws and begin manufacturing.
- Step 8:** We commence manufacturing up to powder coating and final assembly stage.
- Step 9:** We perform an onsite test fit to assure proper form, fit, and function.
- Step 10:** We make any necessary modifications to the platform based on onsite test results.
- Step 11:** We complete powder coat and final assembly of the platform.
- Step 12:** We ship the final product to the customer.



# S·A·F·E

— STRUCTURE DESIGNS —

JOHN 13:7

## A BRIEF WORD FROM JOHNNY BUSCEMA, OUR PRESIDENT & CEO:

*"The key to our success has always been our ability to manufacture the highest quality and most ergonomic products available on the market. This process alone is what our customers value the most, and it has been crucial to the success of a company of this magnitude."*

*"I am so fortunate that Christ has afforded me the vision, skill set, and business acumen to successfully assemble and work with such a superior group of specialized team members. Our future is bright, and we welcome any and all challenges that drive us to exceed our client's expectations and enable us to be the best at what we do."*

## MEET THE S.A.F.E. STRUCTURE DESIGNS TEAM:



**JOHNNY BUSCEMA**

President & CEO  
Johnny@SAFE-2.com



**JIM SCHWADER**

Military Operations  
Account Manager



**JON ZIEGLER**

Senior Engineer



**DONOVAN JUWANO**

Lean Manufacturing  
& Quality Control



**CHARLENE CARABEO**

Public Relations



**PHIL TIRADO**

Logistics Manager



**FULVIA SANTONI**

Marketing & Account Exec.  
Fulvia@SAFE-2.com



**BRY MAGGIO**

Admin. Assistant